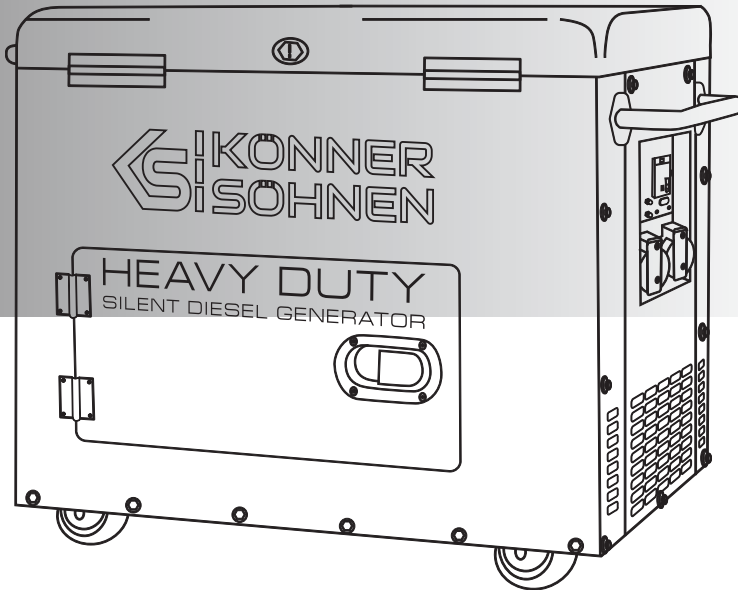


HEAVY DUTY SILENT DIESEL GENERATOR EXPLODED VIEW

KS 11-2DE ATSR



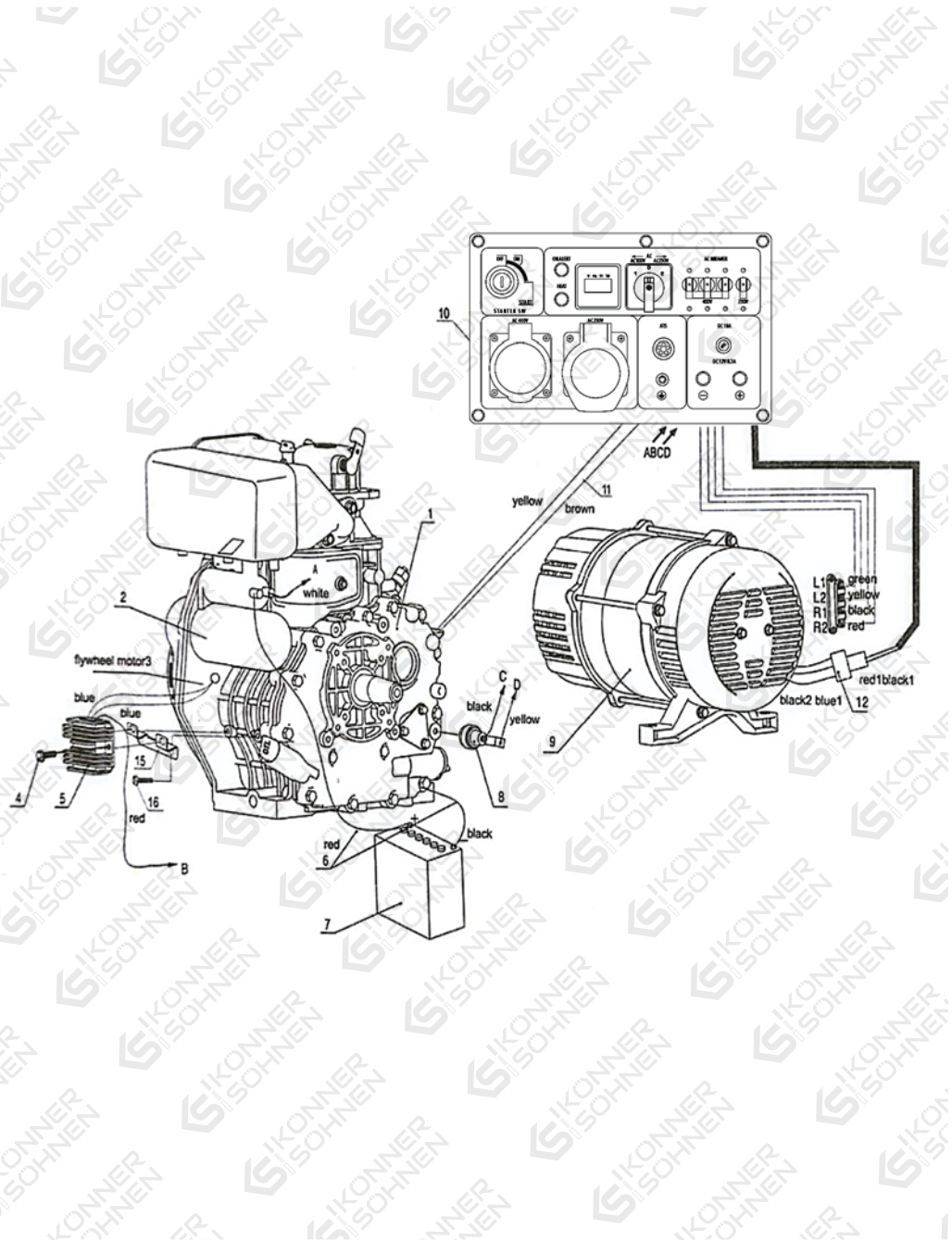
TRADITIONELLE DEUTSCHE QUALITÄT

CONTENTS

1. Parts of generator	2
2. Engine Block	4
3. Cylinder head Assembly	7
4. Piston connecting rod and crankshaft balancing mechanism.....	10
5. Fuel System Parts	12
6. Oil and speed control system	14
7. Cooling and recoil starting system.....	16
8. Air cleaner and silencer system.....	17
9. Starting motor and flywheel alternator system.....	19
10. Case Assembly.....	20
11 . Parts of fuel tank.....	21
12. Muffler Assambly.....	22
13. Battery And Electric Parts.....	24
14. Parts of panel.....	25
15. Electric scheme.....	27

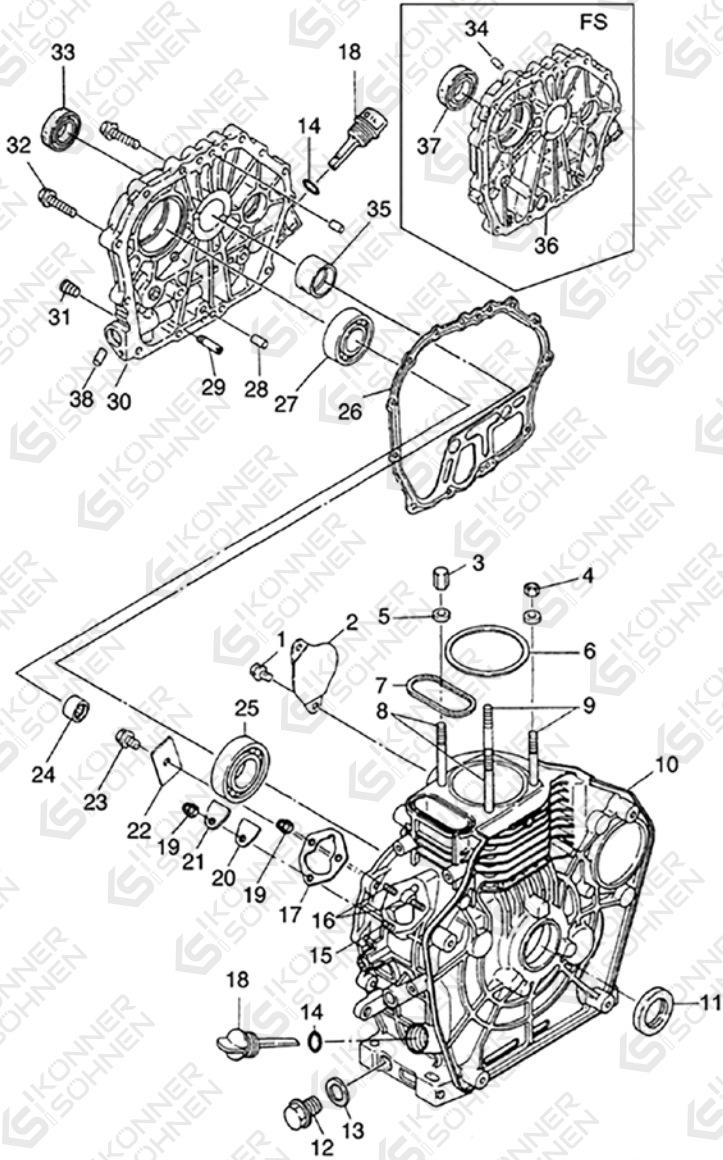
! This material is for informational purposes only and is not an instruction. The connection of the equipment in each case must be performed by a certified electrician, in accordance with local laws and regulations. Before connecting, we urge you to read the recommendations in the manual for the generator. The manufacturer is not responsible for improper connection of equipment, and is not responsible for possible material and physical damage that may occur as a result of improper installation, connection or operation of equipment.

1. PARTS OF GENERATOR



No	REF. No	DESCRIPTION	QTY
1	KS 11-2DE ATSR -1-001	AT series diesel engine	1
2	KS 11-2DE ATSR -1-002	Starter Motor	1
3	KS 11-2DE ATSR -1-003	Flywheel generator	1
4	KS 11-2DE ATSR -1-004	Bolt	2
5	KS 11-2DE ATSR -1-005	Voltage Regulator	1
6	KS 11-2DE ATSR -1-006	Battery Cable (red, black)	2
7	KS 11-2DE ATSR -1-007	Battery	1
8	KS 11-2DE ATSR -1-008	Oil level sensor	1
9	KS 11-2DE ATSR -1-009	Alternator	1
10	KS 11-2DE ATSR -1-010	Output panel assembly	1
11	KS 11-2DE ATSR -1-011	Throttle cable	2
12	KS 11-2DE ATSR -1-012	Connector assembly	1
15	KS 11-2DE ATSR -1-015	Voltage Regulator Bracket	1
16	KS 11-2DE ATSR -1-016	Bolt	2

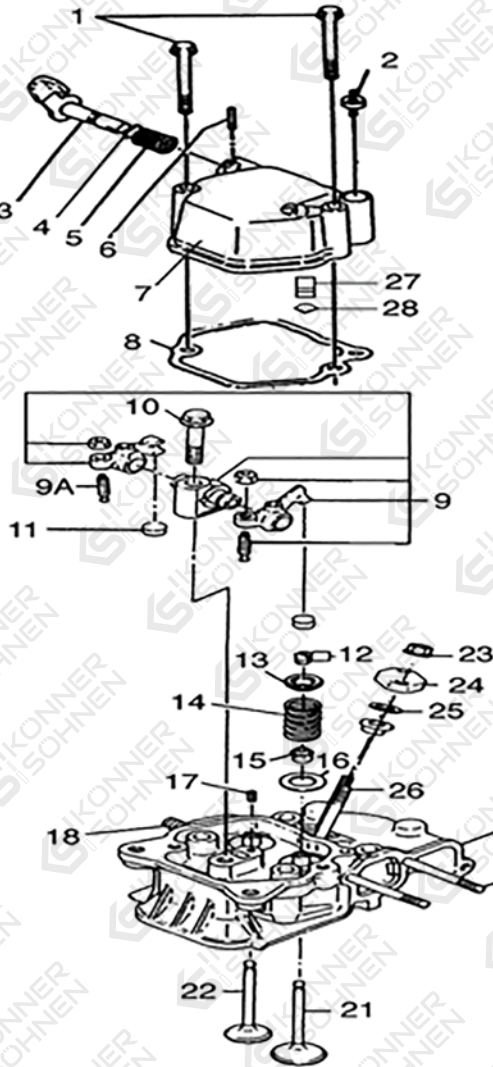
2. ENGINE BLOCK



No	REF. No	DESCRIPTION	QTY
1	KS 11-2DE ATSR -2-001	Bolt M10×16	2
2	KS 11-2DE ATSR -2-002	Starter motor hole cover	1
3	KS 11-2DE ATSR -2-003	Cylinder head nuts (long)	2
4	KS 11-2DE ATSR -2-004	Cylinder head nuts (short)	2
5	KS 11-2DE ATSR -2-005	Cylinder head nut gasket	4
6	KS 11-2DE ATSR -2-006	Cylinder head gasket (0.1~0.5)	1
7	KS 11-2DE ATSR -2-007	Oval ring gasket 5.0×2.3	1
8	KS 11-2DE ATSR -2-008	Cylinder head bolts (long)	2
9	KS 11-2DE ATSR -2-009	Cylinder head bolts (short)	2
10	KS 11-2DE ATSR -2-010	Engine block	1
11	KS 11-2DE ATSR -2-011	Rear oil seal DR38×52×8	1
12	KS 11-2DE ATSR -2-012	Oil drain plug	1
13	KS 11-2DE ATSR -2-013	Oil drain plug gasket	1
14	KS 11-2DE ATSR -2-014	“O” ring	1
15	KS 11-2DE ATSR -2-015	Fuel pump fastening bolt (short)	1
16	KS 11-2DE ATSR -2-016	Fuel pump fastening bolt (long)	2
17	KS 11-2DE ATSR -2-017	Fuel pump gasket (0.1~0.5)	few
18	KS 11-2DE ATSR -2-018	Oil dipstick	1

No	REF. No	DESCRIPTION	QTY
19	KS 11-2DE ATSR -2-019	Flanged nut M6	3
20	KS 11-2DE ATSR -2-020	Sealing plate gasket	1
21	KS 11-2DE ATSR -2-021	Sealing plate	1
22	KS 11-2DE ATSR -2-022	Thrust piece	1
23	KS 11-2DE ATSR -2-023	Flanged bolt M8×12	1
24	KS 11-2DE ATSR -2-024	Needle bearing HK1522	1
25	KS 11-2DE ATSR -2-025	Ball bearing TM6310	1
26	KS 11-2DE ATSR -2-026	Crankcase cover gasket	1
27	KS 11-2DE ATSR -2-027	Ball bearing 6207	1
28	KS 11-2DE ATSR -2-028	Retaining pin Ø8×12	2
29	KS 11-2DE ATSR -2-029	Oil guide pipe	1
30	KS 11-2DE ATSR -2-030	Crankcase cover	1
31	KS 11-2DE ATSR -2-031	Inner hexagon plug Z1/8	1
32	KS 11-2DE ATSR -2-032	Flanged bolt M10×35	20
33/37	KS 11-2DE ATSR - 2-033/37	Front oil seal DL35×50×10	1
35	KS 11-2DE ATSR -2-035	Main bushing	1
38	KS 11-2DE ATSR -2-038	Aluminum plug diameter Ø8×8	3

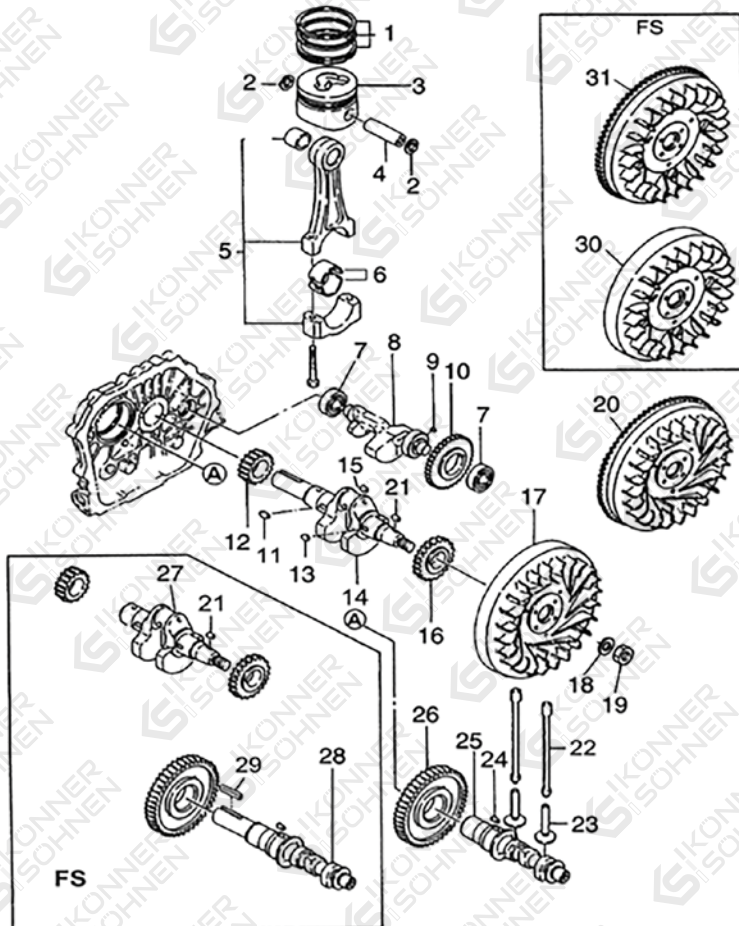
3. CYLINDER HEAD ASSEMBLY



No	REF. No	DESCRIPTION	QTY
1	KS 11-2DE ATSR -3-001	Flanged bolt M6×83	3
2	KS 11-2DE ATSR -3-002	Oiling hole plug	1
3	KS 11-2DE ATSR -3-003	Decompression shaft	1
4	KS 11-2DE ATSR -3-004	"O" ring $\Phi 10 \times 1.9$	1
5	KS 11-2DE ATSR -3-005	Decompression shaft spring	1
6	KS 11-2DE ATSR -3-006	Retaining bolt	1
7	KS 11-2DE ATSR -3-007	Cylinder head cover	1
8	KS 11-2DE ATSR -3-008	Cylinder head cover gasket	1
9	KS 11-2DE ATSR -3-009	Rocker arm assembly	1
9A	KS 11-2DE ATSR -3-09A	Valve clearance adjusting screw	2
10	KS 11-2DE ATSR -3-010	1100FE(Same with186FA)	2
12	KS 11-2DE ATSR -3-012	Valve clip	4
13	KS 11-2DE ATSR -3-013	Valve spring seat	2
14	KS 11-2DE ATSR -3-014	Valve spring	2
15	KS 11-2DE ATSR -3-015	Valve guide oil seal	2
16	KS 11-2DE ATSR -3-016	Valve spring washer	2
17	KS 11-2DE ATSR -3-017	Pin $\Phi 4 \times 8$	1

No	REF. No	DESCRIPTION	QTY
18	KS 11-2DE ATSR -3-018	Double ended stud AM10×25	2
19	KS 11-2DE ATSR -3-019	Cylinder head	1
21	KS 11-2DE ATSR -3-020	Intake valve	1
22	KS 11-2DE ATSR -3-021	Exhaust valve	1
23	KS 11-2DE ATSR -3-022	Flanged nut M6	2
24	KS 11-2DE ATSR -3-023	Fuel injector pressure plate	1
25	KS 11-2DE ATSR -3-024	Fuel injector gasket	few
26	KS 11-2DE ATSR -3-025	Bolt M6×42 (total)	2
27	KS 11-2DE ATSR -3-026	Breather assembly	1
28	KS 11-2DE ATSR -3-027	"O" ring $\Phi 12 \times 1.9$	1

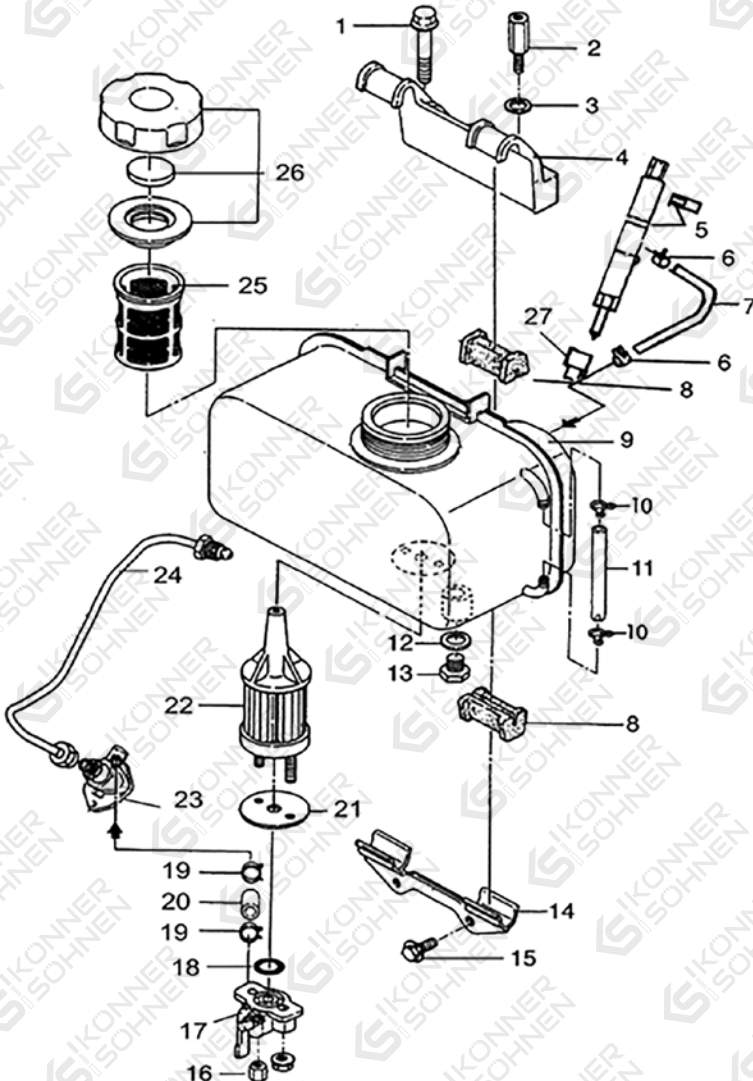
4. PISTON CONNECTING ROD AND CRANK-SHAFT BALANCING MECHANISM



No	REF. No	DESCRIPTION	QTY
1	KS 11-2DE ATSR -4-001	Piston rings	1
2	KS 11-2DE ATSR -4-002	Retainer clip of piston pin $\Phi 26$	2
3	KS 11-2DE ATSR -4-003	Piston	1
4	KS 11-2DE ATSR -4-004	Piston pin	1
5	KS 11-2DE ATSR -4-005	Connecting rod	1
6	KS 11-2DE ATSR -4-006	Connecting rod journal bearing	1
7	KS 11-2DE ATSR -4-007	Bearing 6304	2
8	KS 11-2DE ATSR -4-008	Balancing shaft	1
9	KS 11-2DE ATSR -4-009	Key 5x7	1
10	KS 11-2DE ATSR -4-010	Balancing shaft timing gear	1
11	KS 11-2DE ATSR -4-011	Key 5x12	1
12	KS 11-2DE ATSR -4-012	Crankshaft timing gear	1
13	KS 11-2DE ATSR -4-013	Key 5x7	1
14	KS 11-2DE ATSR -4-014	Crankshaft	1
15	KS 11-2DE ATSR -4-015	Steel ball $\Phi 6.3$	1
16	KS 11-2DE ATSR -4-016	Driving gear of balance shaft	1
17	KS 11-2DE ATSR -4-017	Flywheel	1

No	REF. No	DESCRIPTION	QTY
18	KS 11-2DE ATSR -4-018	Flywheel nut washer	1
19	KS 11-2DE ATSR -4-019	Flywheel nut	1
20	KS 11-2DE ATSR -4-020	Flywheel ring gear (for electric starter)	1
21	KS 11-2DE ATSR -4-021	Key 6×16	1
22	KS 11-2DE ATSR -4-022	Push rod	2
23	KS 11-2DE ATSR -4-023	Tappet	2
24	KS 11-2DE ATSR -4-024	Key 5×12	1
25	KS 11-2DE ATSR -4-025	Camshaft	1
26	KS 11-2DE ATSR -4-026	Camshaft timing gear	1

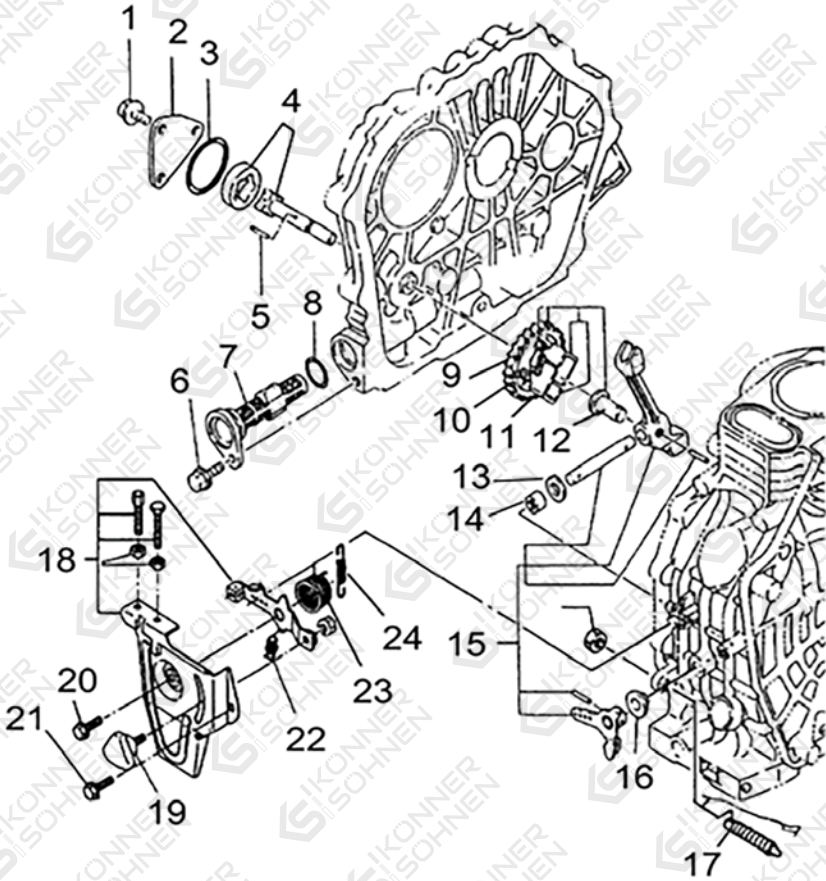
5. FUEL SYSTEM PARTS



No	REF. No	DESCRIPTION	QTY
1	KS 11-2DE ATSR -5-001	Flanged bolt M8×45	1
2	KS 11-2DE ATSR -5-002	Upper fuel tank bracket fastener	1
3	KS 11-2DE ATSR -5-003	Flat washer Ø8	1
4	KS 11-2DE ATSR -5-004	Upper fuel tank bracket	1
5	KS 11-2DE ATSR -5-005	Injector	1
6	KS 11-2DE ATSR -5-006	Fuel return pipe clip Ø9	2
7	KS 11-2DE ATSR -5-007	Fuel return pipe	1
8	KS 11-2DE ATSR -5-008	Rubber cushion of fuel tank	4
9	KS 11-2DE ATSR -5-009	Fuel tank	1
10	KS 11-2DE ATSR -5-010	Clip Ø7	2
11	KS 11-2DE ATSR -5-011	Fuel level display pipe	1
12	KS 11-2DE ATSR -5-012	Fuel drain gasket	1
13	KS 11-2DE ATSR -5-013	Fuel drain bolt	1
14	KS 11-2DE ATSR -5-014	Lower fuel tank bracket	1
15	KS 11-2DE ATSR -5-015	Flanged bolt M6×14	2
16	KS 11-2DE ATSR -5-016	Flanged nut M6	2
17	KS 11-2DE ATSR -5-017	Fuel cock assembly	1

No	REF. No	DESCRIPTION	QTY
18	KS 11-2DE ATSR -5-018	Fuel cock gasket	1
19	KS 11-2DE ATSR -5-019	Fuel pipe clip Ø12	2
20	KS 11-2DE ATSR -5-020	Fuel pipe	1
21	KS 11-2DE ATSR -5-021	Fuel filter gasket	1
23	KS 11-2DE ATSR -5-023	Fuel pump	1
24	KS 11-2DE ATSR -5-024	High pressure fuel pipe	1
25	KS 11-2DE ATSR -5-025	Fuel cup filter	1
26	KS 11-2DE ATSR -5-026	Fuel cap assembly	1

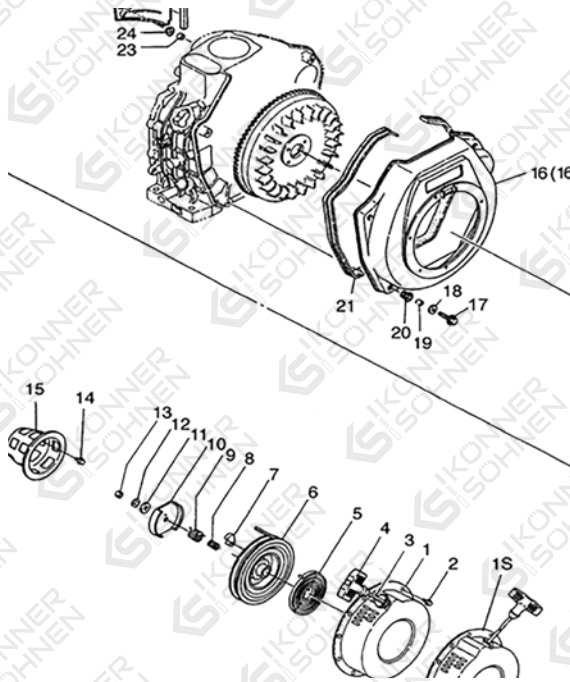
6. OIL AND SPEED CONTROL SYSTEM



No	REF. No	DESCRIPTION	QTY
1	KS 11-2DE ATSR -6-001	Flanged bolt M6×12	3
2	KS 11-2DE ATSR -6-002	Oil pump cover	1
3	KS 11-2DE ATSR -6-003	"O" ring $\Phi 34.5 \times 1.8$	1
4	KS 11-2DE ATSR -6-004	Oil pump	1
5	KS 11-2DE ATSR -6-005	Pin $\Phi 3 \times 18$	1
6	KS 11-2DE ATSR -6-006	Flanged bolt M6×14	1
7	KS 11-2DE ATSR -6-007	Oil filter cleaning element	1
8	KS 11-2DE ATSR -6-008	"O" ring $\Phi 24 \times 2.4$	1
9	KS 11-2DE ATSR -6-009	Oil pump driving gear	1
10	KS 11-2DE ATSR -6-010	Fly block pin	3
11	KS 11-2DE ATSR -6-011	Fly block	3
12	KS 11-2DE ATSR -6-012	Governor fork tappet	1
13	KS 11-2DE ATSR -6-013	Lever shaft gasket	few
14	KS 11-2DE ATSR -6-014	Bearing HK0810 $\Phi 12$	2
15	KS 11-2DE ATSR -6-015	Fork lever assembly	1
16	KS 11-2DE ATSR -6-016	Lever shaft oil seal	1
17	KS 11-2DE ATSR -6-017	Fuel controller parts	1

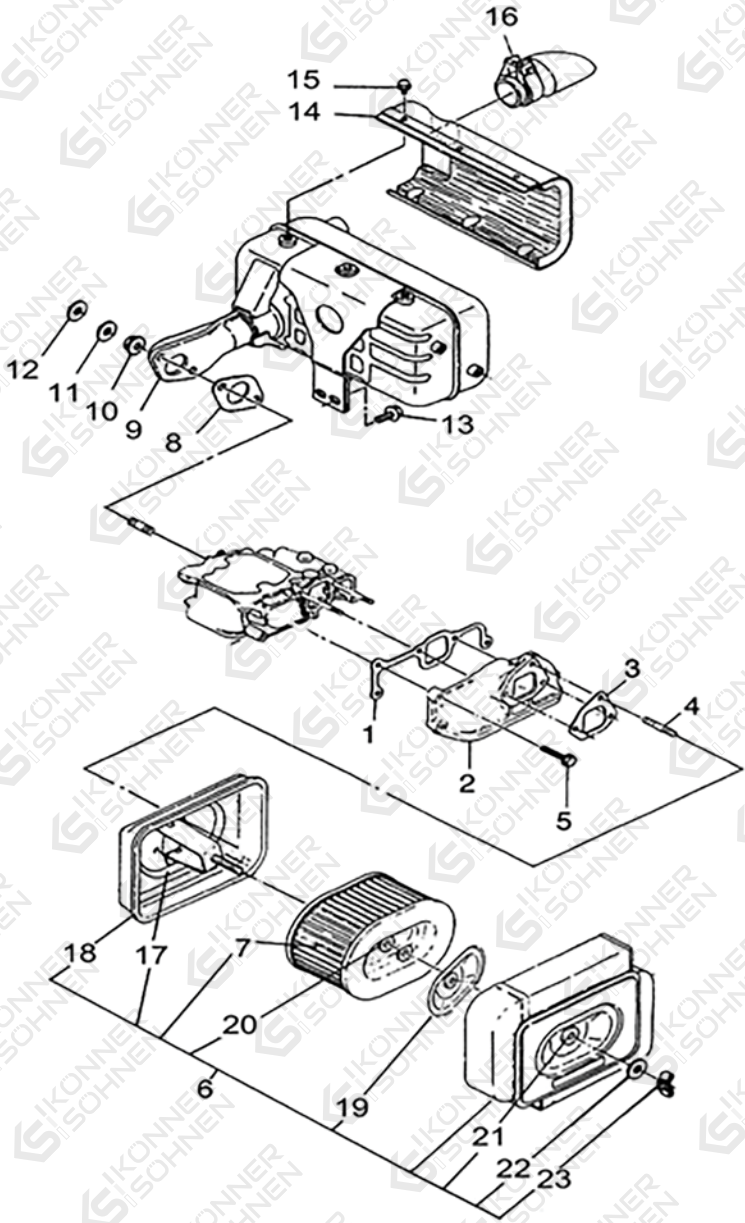
No	REF. No	DESCRIPTION	QTY
18	KS 11-2DE ATSR -6-018	Handle bracket assembly	1
19	KS 11-2DE ATSR -6-019	Speed-control lever	1
20	KS 11-2DE ATSR -6-020	Flanged bolt M6×20	1
21	KS 11-2DE ATSR -6-021	Flanged bolt M6×14	1
22	KS 11-2DE ATSR -6-022	Return spring 2	1
23	KS 11-2DE ATSR -6-023	Return spring 1	1
24	KS 11-2DE ATSR -6-024	Speed-control spring	1

7. COOLING AND RECOIL STARTING SYSTEM



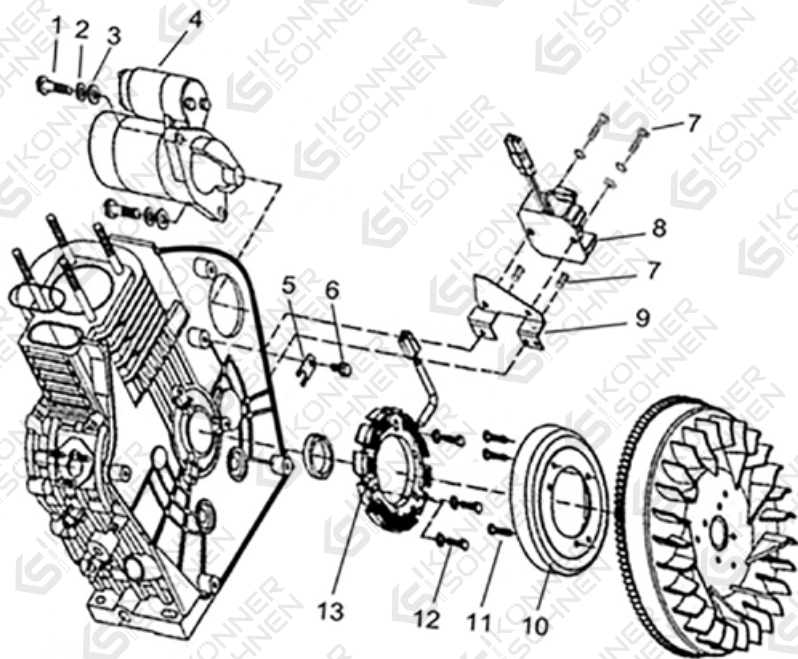
No	REF. No	DESCRIPTION	QTY
16	KS 11-2DE ATSR -7-016	Cooling fan case	1
17	KS 11-2DE ATSR -7-017	Flanged bolt M6x22	1
18	KS 11-2DE ATSR -7-018	Big washer $\Phi 6$	7
23	KS 11-2DE ATSR -7-023	Bushing of wind leading plate	7
24	KS 11-2DE ATSR -7-024	Shock absorber of wind leading cover plate	1
25	KS 11-2DE ATSR -7-025	Wind leading plate	1
26	KS 11-2DE ATSR -7-026	Flanged bolt M6x14 Flanged bolt M6x20	2 1

8. AIR CLEANER AND SILENCER SYSTEM



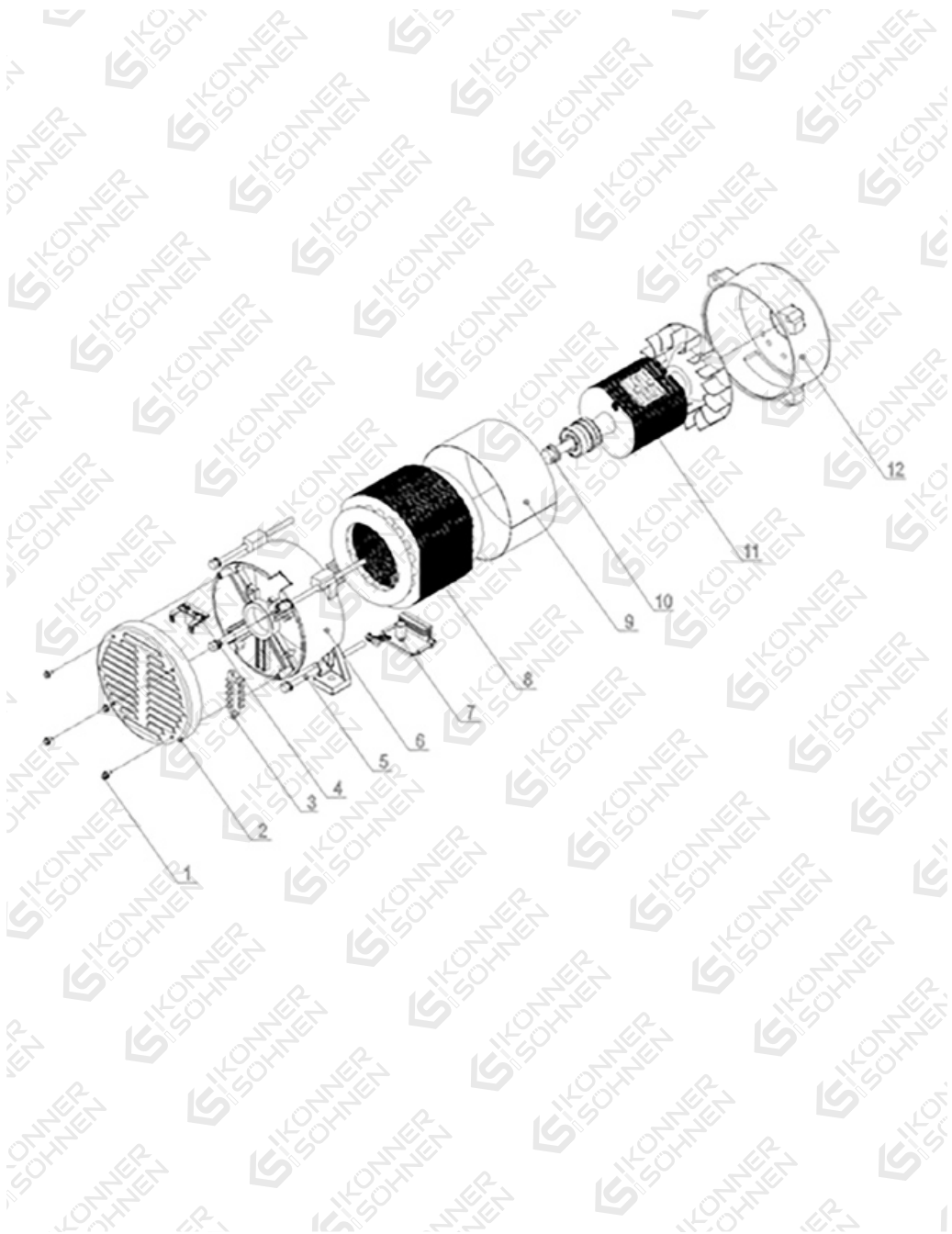
No	REF. No	DESCRIPTION	QTY
1	KS 11-2DE ATSR -8-001	Intake pipe gasket	1
2	KS 11-2DE ATSR -8-002	Intake pipe	1
3	KS 11-2DE ATSR -8-003	Air cleaner gasket	1
4	KS 11-2DE ATSR -8-004	Flanged bolt M6×22 Flanged bolt M6×12	2 1
5	KS 11-2DE ATSR -8-005	Flanged bolt M6×25	6
6	KS 11-2DE ATSR -8-006	Air filter assembly	1
7	KS 11-2DE ATSR -8-007	Air filter element	1
8	KS 11-2DE ATSR -8-008	Muffler gasket	1
9	KS 11-2DE ATSR -8-009	Muffler assembly	1
10	KS 11-2DE ATSR -8-010	Washer Φ 10	4
11	KS 11-2DE ATSR -8-011	Spring washer Φ 10	2
12	KS 11-2DE ATSR -8-012	Nut M10	2
13	KS 11-2DE ATSR -8-013	Flanged bolt M8×16	2
14	KS 11-2DE ATSR -8-014	Muffler screen cover	1
15	KS 11-2DE ATSR -8-015	Flanged bolt M6×8	4
16	KS 11-2DE ATSR -8-016	Muffler revolve tail pipe	1
17	KS 11-2DE ATSR -8-017	Inner shock proof sealing ring	1
18	KS 11-2DE ATSR -8-018	Bottom case assembly of air cleaner	1
20	KS 11-2DE ATSR -8-020	Air filter shock absorber 1	1
21	KS 11-2DE ATSR -8-021	Air filter shock absorber 2	1
22	KS 11-2DE ATSR -8-022	Gasket of air filter Φ 8	1
23	KS 11-2DE ATSR -8-023	Nut of air lter M8	1

9. STARTING MOTOR AND FLYWHEEL ALTERNATOR SYSTEM



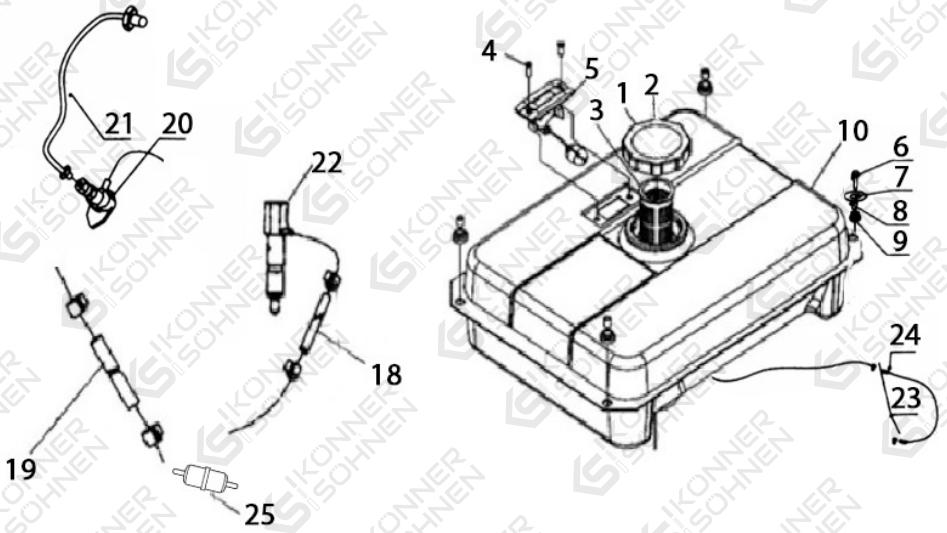
No	REF. No	DESCRIPTION	QTY
1	KS 11-2DE ATSR -9-001	Bolt M10×35 Inside hexagonal bolt M10×35	3
2	KS 11-2DE ATSR -9-002	Spring Washer Φ10	2
3	KS 11-2DE ATSR -9-003	Washer Φ10	2
4	KS 11-2DE ATSR -9-004	Starting motor assembly	1
5	KS 11-2DE ATSR -9-005	Retainer	1
6	KS 11-2DE ATSR -9-006	Flanged bolt M6×12	1
7	KS 11-2DE ATSR -9-007	Flanged bolt M6×14	4
8	KS 11-2DE ATSR -9-008	Volt regulator	1
9	KS 11-2DE ATSR -9-009	Support of volt regulator	1
10	KS 11-2DE ATSR -9-010	Rotor of flywell alternator	1
11	KS 11-2DE ATSR -9-011	Countersunk bolt M6×12	3
12	KS 11-2DE ATSR -9-012	Flanged bolt M6×18	3
13	KS 11-2DE ATSR -9-013	Starter of flywell alternator	1

10. PARTS OF ALTERNATOR



No	REF. No	DESCRIPTION	QTY
1	KS 11-2DE ATSR -10-001	Boltwith flangeface	4
2	KS 11-2DE ATSR -10-002	Tailcover	1
3	KS 11-2DE ATSR -10-003	Line bank	1
4	KS 11-2DE ATSR -10-004	Carbin brush	1
5	KS 11-2DE ATSR -10-005	Boltwith flangeface	4
6	KS 11-2DE ATSR -10-006	Rear end cober	1
7	KS 11-2DE ATSR -10-007	AVR	1
8	KS 11-2DE ATSR -10-008	Stator	1
9	KS 11-2DE ATSR -10-009	Shield	1
10	KS 11-2DE ATSR -10-010	Center bolt	1
11	KS 11-2DE ATSR -10-011	Rotor	1
12	KS 11-2DE ATSR -10-012	Front end cover	1

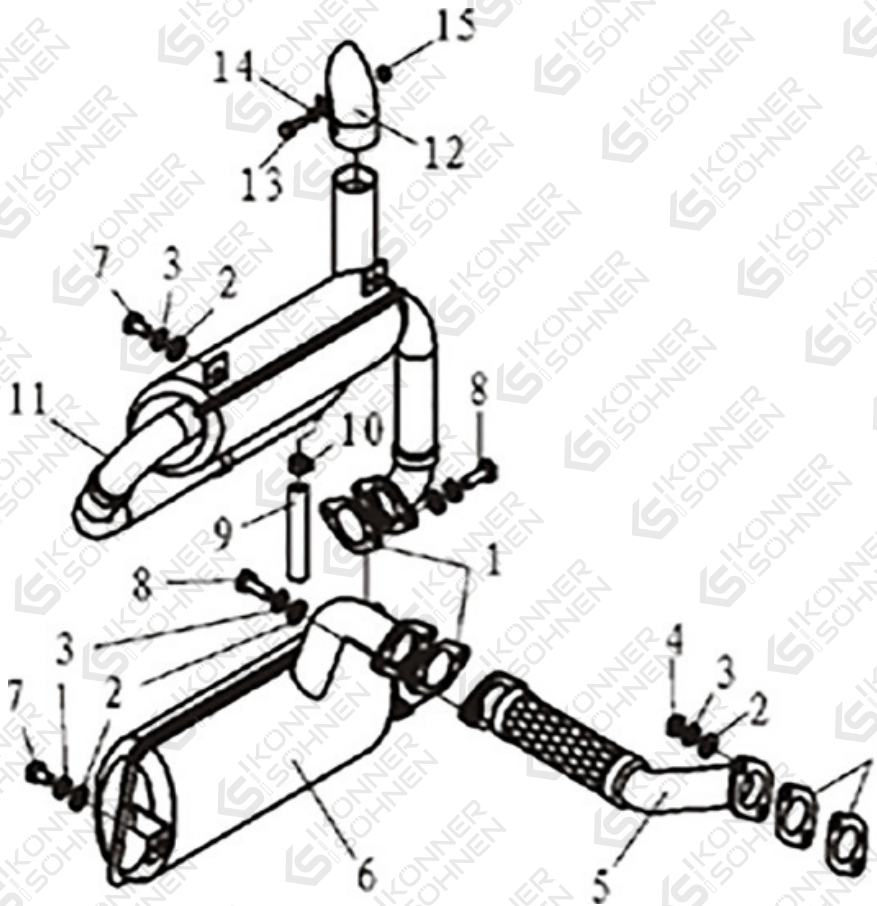
11. PARTS OF FUEL TANK



No	REF. No	DESCRIPTION	QTY
1	KS 11-2DE ATSR -11-001	Fuel cap	1
2	KS 11-2DE ATSR -11-002	Seal	1
3	KS 11-2DE ATSR -11-003	Filtering cup	1
4	KS 11-2DE ATSR -11-004	M5x10 screw	2
5	KS 11-2DE ATSR -11-005	Fuel lever indicator	1

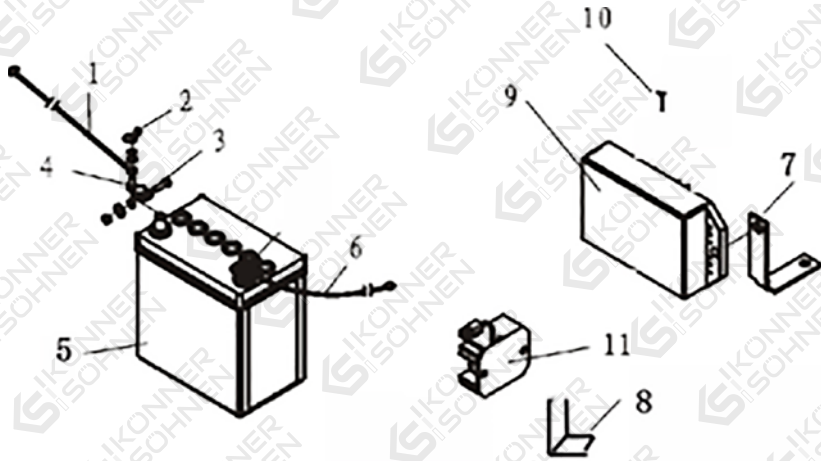
No	REF. No	DESCRIPTION	QTY
6	KS 11-2DE ATSR -8-006	M6x25 Bolt	4
7	KS 11-2DE ATSR -8-007	Large flat washer 6	4
8	KS 11-2DE ATSR -8-008	Fuel tank lining	4
9	KS 11-2DE ATSR -8-009	Shock absorbing gasket	4
10	KS 11-2DE ATSR -8-010	Fuel tank	1
19	KS 11-2DE ATSR -8-019	Fuel inlet pipe	1
20	KS 11-2DE ATSR -8-020	High pressure fuel pump	1
21	KS 11-2DE ATSR -8-021	High pressure fuel pipe	1
22	KS 11-2DE ATSR -8-022	Fuel injector	1
23	KS 11-2DE ATSR -8-023	Overfill tube	2
24	KS 11-2DE ATSR -8-024	Fuel overfill pipe	1
25	KS 11-2DE ATSR -8-025	Fuel filter	1

12. MUFFLER ASSEMBLY



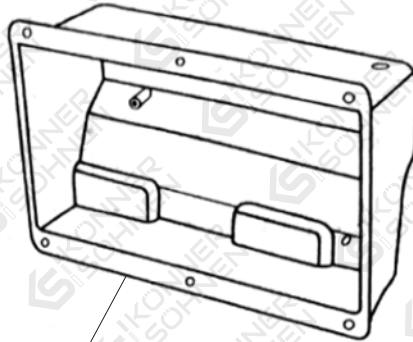
No	REF. No	DESCRIPTION	QTY
1	KS 11-2DE ATSR -10-001	Exhaust Pipe Washer	4
2	KS 11-2DE ATSR -10-002	Flat Gasket 8	9
3	KS 11-2DE ATSR -10-003	Elastic Washers 8	9
4	KS 11-2DE ATSR -10-004	Nut M8	2
5	KS 11-2DE ATSR -10-005	Exhaust Pipe Unit	1
6	KS 11-2DE ATSR -10-006	Silent Generator Muer Assembly	1
7	KS 11-2DE ATSR -10-007	Bolt.M8X16	3
8	KS 11-2DE ATSR -10-008	Bolt.M8X30	4
9	KS 11-2DE ATSR -10-009	Outlet Tube of Tail Air Particle	1
10	KS 11-2DE ATSR -10-010	Clip I	1
11	KS 11-2DE ATSR -10-011	Silent Generator Muer Assembly	1
12	KS 11-2DE ATSR -10-012	Return Outlet of Tail Air Weldment	1
13	KS 11-2DE ATSR -10-013	Bolt.M6X30	1
14	KS 11-2DE ATSR -10-014	Flat Gasket 6	1
15	KS 11-2DE ATSR -10-015	Nut M6	1

13. BATTERY AND ELECTRIC PARTS

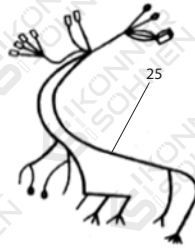


No	REF. No	DESCRIPTION	QTY
1	KS 11-2DE ATSR -13-001	Battery Positive Wiring (Red)	1
2	KS 11-2DE ATSR -13-002	Wing Nut M6	2
3	KS 11-2DE ATSR -13-003	Bolt M6X25	2
4	KS 11-2DE ATSR -13-004	Battery Positive Wiring Clip	1
5	KS 11-2DE ATSR -13-005	12V 36AH Battery	1
6	KS 11-2DE ATSR -13-006	Battery Ground Wire (Black)	1
7	KS 11-2DE ATSR -13-007	AVR Bracket	1
8	KS 11-2DE ATSR -13-008	Voltage regulator Bracket	1
9	KS 11-2DE ATSR -13-009	AVR(Single Phase)	1
10	KS 11-2DE ATSR -13-010	Bolt M6X20	6
11	KS 11-2DE ATSR -13-011	Charging Adjustor	1

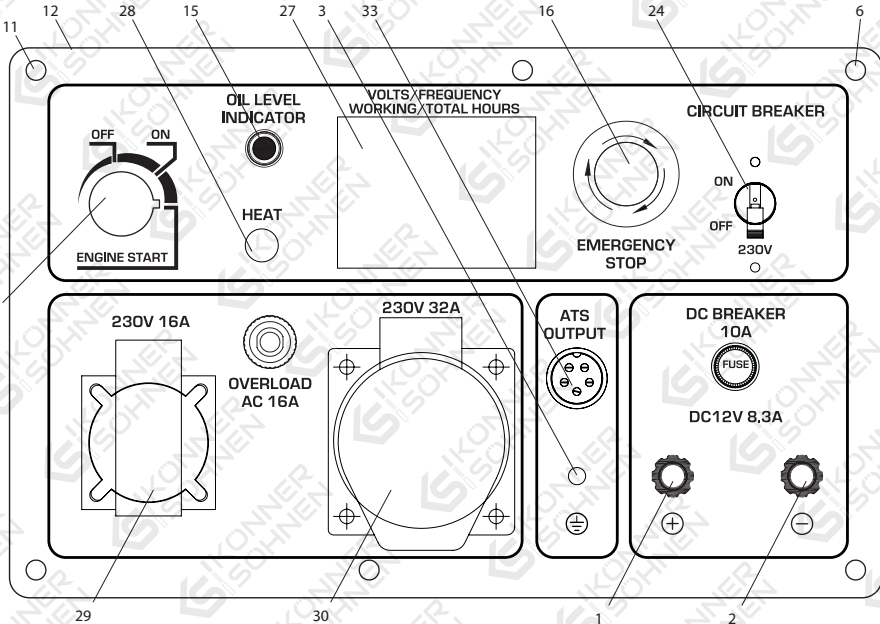
14. PARTS OF PANEL



26



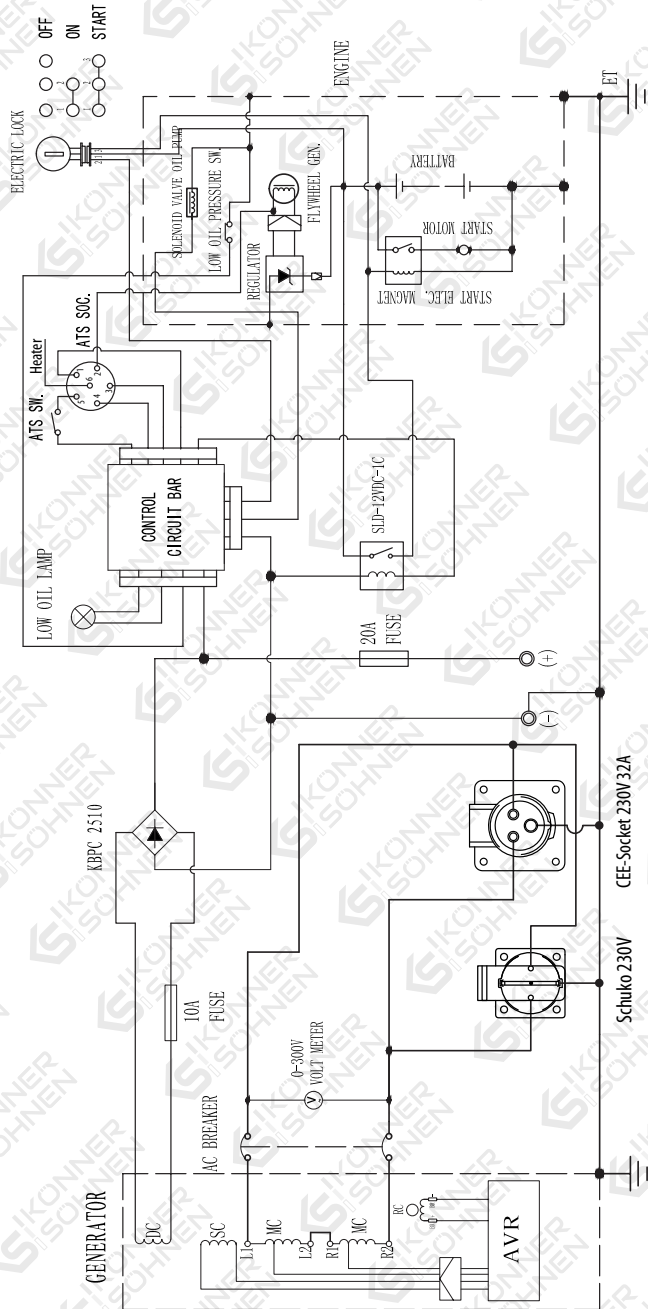
25



No	REF. No	DESCRIPTION	QTY
1	KS 11-2DE ATSR -14-001	Positive DC port	1
2	KS 11-2DE ATSR -14-002	Negative DC port	1
3	KS 11-2DE ATSR -14-003	Grounded bolt	1
5	KS 11-2DE ATSR -14-005	Large Nut	1
6	KS 11-2DE ATSR -14-006	Bolt	2
11	KS 11-2DE ATSR -14-011	Electric panel bolt M6x20	6
12	KS 11-2DE ATSR -14-012	Electric panel	1
13	KS 11-2DE ATSR -14-013	Starter switch	1
14	KS 11-2DE ATSR -14-014	Nut M4	8
15	KS 11-2DE ATSR -14-015	Oil alert lamp	1
16	KS 11-2DE ATSR -14-016	Emmergency stop button	1
18	KS 11-2DE ATSR -14-018	DC fuse	1
24	KS 11-2DE ATSR -14-024	Breaker single phase	1
25	KS 11-2DE ATSR -14-025	Wiring harness	1
26	KS 11-2DE ATSR -14-026	Electrical box	1
27	KS 11-2DE ATSR -14-027	Digital meter	1
28	KS 11-2DE ATSR -14-028	Heater switch	1
29	KS 11-2DE ATSR -14-029	230V 16A socket	1
30	KS 11-2DE ATSR -14-030	230V 23A socket	1

15. ELECTRIC SCHEME

For diesel generator



CONTACTS

konner-sohnen.com

Germany

info@dimaxgroup.de

Poland

info.pl@dimaxgroup.de

Ukraine

sales@ks-power.com.ua